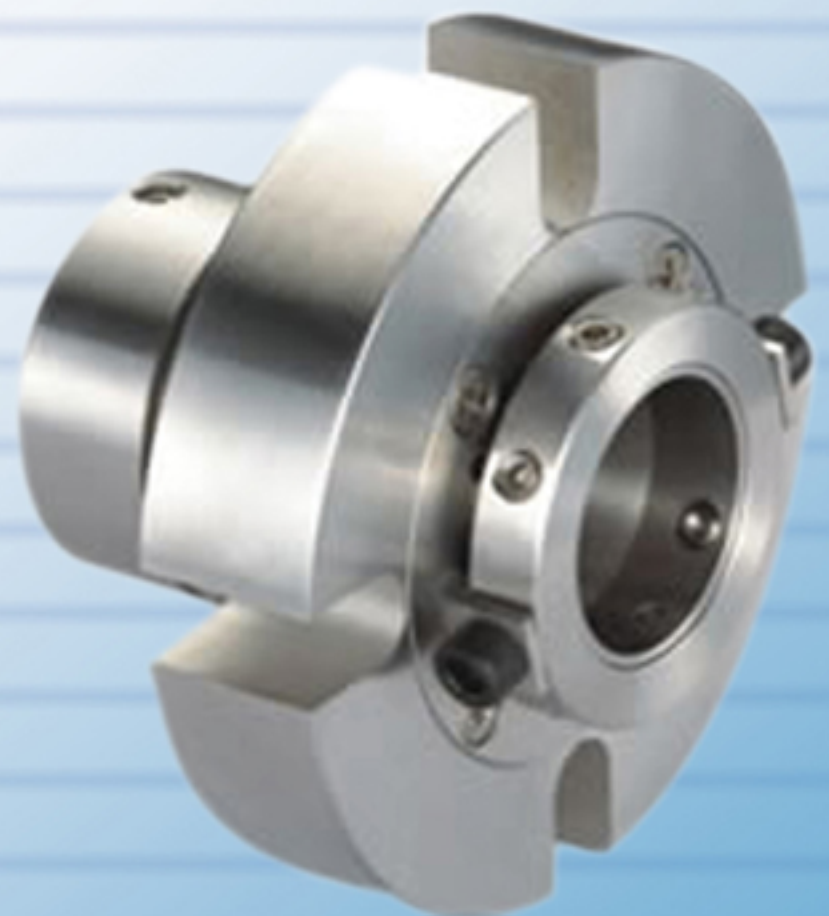




*LEAK-END*  
Engineers

*Better by leaking solutions*



**LEAK-END MECHANICAL SEAL MANUFACTURE**



### TYPE : LEE-S1

#### Unbalance

#### Applications:

Generally used in sewage application, waste water pumps & fuel injection pumps.

#### Operating Limits

Shaft Dia. : 10 to 100mm  
Pressure : up to 10 Bars  
Temperature : -20 to 150°C



### TYPE : LEE-S2

#### Unbalance

#### Applications:

Generally used for handling corrosive chemicals, hydrocarbons, general & light chemicals.

#### Operating Limits

Shaft Dia. : 10 to 100mm  
Pressure : up to 10 Bars  
Temperature : -50 to 180°C



### TYPE : LEE-S3

#### Unbalance

#### Applications:

Generally used in refineries, fertilizers & petroleum pipelines.

#### Operating Limits

Shaft Dia. : 25 to 150mm  
Pressure : up to 10 Bars  
Temperature : -50 to 180°C



### TYPE : LEE-S4

#### Unbalance

#### Applications:

Generally used in hot & cold-water pumps, oil Pumps, refrigeration compressor & fuel injection pumps.

#### Operating Limits

Shaft Dia. : 10 to 100mm  
Pressure : up to 10 Bars  
Temperature : -20 to 150°C





### TYPE : LEE-T26

#### Unbalance

#### Applications:

Generally used in acids,alkalis & extremely corrosive services.

#### Operating Limits

Shaft Dia. : 18 to 100mm  
Pressure : up to 05 Bars  
Temperature : -20 to 80°C



### TYPE : LEE-U22

#### Unbalance

#### Applications:

Generally used in petrochemical, petroleum refineries, light hydrocarbons & general industrial fluids.

#### Operating Limits

Shaft Dia. : 14 to 150mm  
Pressure : up to 10 Bars  
Temperature : -50 to 280°C



### TYPE : LEE-B23

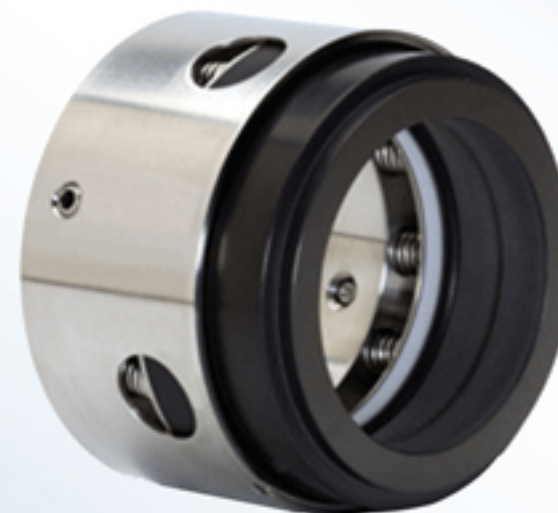
#### Balance

#### Applications:

Generally used in petrochemical, petroleum refineries, light hydrocarbons & general industrial fluids.

#### Operating Limits

Shaft Dia. : 14 to 150mm  
Pressure : up to 30 Bars  
Temperature : -50 to 280°C



### TYPE : LEE-S5

#### Unbalance

#### Applications:

Generally used in high pressure pumps, refineries, fertilizer & petroleum product.

#### Operating Limits

Shaft Dia. : 10 to 150mm  
Pressure : up to 30 Bars  
Temperature : -50 to 180°C





### TYPE : LEE-R24

#### Reverse balance

#### Applications:

Generally used for handling corrosive chemicals, Light hydrocarbons & general industrial fluids.

#### Operating Limits

Shaft Dia. : 10 to 100mm  
Pressure : up to 10 Bars  
Temperature : -20 to 180°C



### TYPE : LEE-B10

#### Unbalance

#### Applications:

Generally used for handling highly corrosive chemicals, high temperature applications, petroleum refinery etc.

#### Operating Limits

Shaft Dia. : 19 to 100mm  
Pressure : up to 15 Bars  
Temperature : -50 to 350°C



### TYPE : LEE-D25

#### Unbalance

#### Applications:

Generally used in petroleum, chemistry, refinery, paper making, pharmacy, power and auto industry.

#### Operating Limits

Shaft Dia. : 20 to 100mm  
Pressure : up to 7 Bars  
Temperature : -30 to 200°C



### TYPE : LEE-S6

#### Balance

#### Applications:

Generally used in paper industries, petroleum refinery etc, petrochemicals.

#### Operating Limits

Shaft Dia. : 25 to 150mm  
Pressure : up to 15 Bars  
Temperature : -50 to 180°C





#### TYPE : LEE-W10

##### Unbalance

##### Applications:

Generally used for handling highly corrosive chemicals, high temperature applications, petroleum refinery etc.

##### Operating Limits

Shaft Dia. : 18 to 100mm  
Pressure : up to 25 Bars  
Temperature : -50 to 220°C



#### TYPE : LEE-W12

##### Unbalance

##### Applications:

Generally used in petroleum, chemistry, refinery, paper making, pharmacy, power and auto industry.

##### Operating Limits

Shaft Dia. : 15 to 200mm  
Pressure : up to 25 Bars  
Temperature : -50 to 220°C



#### TYPE : LEE-C37

##### Unbalance

##### Applications:

Generally used in boiler feeds, drinking water, shipping, water treatment, hospitals, food & beverage, and many more.

##### Operating Limits

Shaft Dia. : 12, 16, 22mm  
Pressure : Up to 16 Bars  
Temperature : -40 to 200°C



#### TYPE : LEE-S21

##### Unbalance

##### Applications:

Generally used in many water-based applications, such as waste water treatment, pulp and paper, food processing, marine, and other applications.

##### Operating Limits

Shaft Dia. : 15 to 80mm  
Pressure : Up to 20 Bars  
Temperature : -40 to 150°C





### TYPE : LEE-C31

#### Unbalance

#### Applications:

Generally used in sewage application, waste water pumps & fuel injection pumps.

#### Operating Limits

Shaft Dia. : 10 to 100mm  
Pressure : up to 10 Bars  
Temperature : -20 to 150°C



### TYPE : LEE-C32

#### Unbalance

#### Applications:

Generally used for handling highly corrosive chemicals, high temperature applications, petroleum refinery etc.

#### Operating Limits

Shaft Dia. : 19 to 100mm  
Pressure : up to 15 Bars  
Temperature : -50 to 350°C



### TYPE : LEE-C36

#### Balance

#### Applications:

Generally used in Hot and Cold Water Application  
Thermic Oil and air Application.

#### Operating Limits

Shaft Dia. : 10 to 100mm  
Pressure : up to 10 Bars  
Temperature : Up to 160°C



### TYPE : LEE-TS

#### Applications:

Thermosyphon Pot is used for supplying buffer fluid & pressurising double & tandem Mechanical seals.

TP1 Support System are equipped with all necessary connections & fittings to suits new requirements after installation.

These can also be supplied with refill unit to maintain the buffer fluid level during operation without disturbing the process.

TP1 Seal Pots can also be supplied as per API 610 specifications.





### TYPE : LEE-A11

#### High Pressure Double Mech. Seal Applications:

Generally used for pulper, plastics & pharmaceutical industries.

#### Operating Limits

Shaft Dia. : 40 to 200mm  
Pressure : up to 60 Bars  
Temperature : -20 to 200°C



### TYPE : LEE-D10

#### Dry Running Seal

#### Applications:

Generally used in top entry mixer vessels in pharmaceutical & chemical industries.

#### Operating Limits

Shaft Dia. : 25 to 100mm  
Pressure : up to 1.40 MPa  
Temperature : -10 to 150°C



### TYPE : LEE-A12

#### Double Mech. Seal

#### Applications :-

Generally used for pulper, plastics & pharmaceutical industries

#### Operating Limits

Shaft Dia. : 40 to 200mm  
Pressure : up to 10 KG  
Temperature : -20 to 200°C







# *LEAK-END* Engineers

A/20, Surat Singh Compound, Behind Agarwal Indl. Estate, S.V. Road Jogeshwari (W) Mumbai - 400102  
Tel.: 022-61274946, Web :- [www.leakend.com](http://www.leakend.com), E-mail : [info@leakend.com](mailto:info@leakend.com), [leakend@gmail.com](mailto:leakend@gmail.com)